

Investor Information

As of March 31, 2014

Head Office

23-23, Honcho, Itabashi-ku, Tokyo 173-0001, Japan
 Phone: +81-3-5248-7711 Fax: +81-3-5248-7760
 URL: <http://www.lintec-global.com/>

Established

October 15, 1934

Fiscal Year-End

March 31

Net Assets

¥152,610 million

Common Stock

Authorized: 300,000,000 shares
 Issued: 76,564,240 shares

Stock Listing

Tokyo Stock Exchange, 1st Section
 Securities Code: 7966

Shareholder Register Agent for Common Stock

Mitsubishi UFJ Trust and Banking Corporation
 1-4-5, Marunouchi, Chiyoda-ku,
 Tokyo 100-8212, Japan

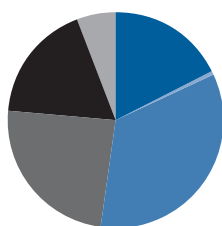
Number of Employees

4,223 (Consolidated)
 2,536 (Parent company only)

Major Shareholders

Nippon Paper Industries Co., Ltd.	30.13%
MSIP CLIENT SECURITIES	4.22%
The Master Trust Bank of Japan, Ltd. (Trust Account)	3.28%
National Mutual Insurance Federation of Agricultural Cooperatives.	3.18%
Tamie Shoji	2.49%

Ownership and Distribution of Shares



Financial Institutions.....	17.76%
Securities Companies	0.46%
Other Companies.....	34.12%
Overseas Companies.....	24.22%
Individuals and Other	17.65%
Treasury Stock.....	5.79%

Major Subsidiaries

Domestic

LINTEC COMMERCE, INC.*
 LINTEC SIGN SYSTEM, INC.*
 FUJI-LIGHT, INC.*
 RENRI, INC.
 LINTEC SERVICES, INC.
 LINTEC CUSTOMER SERVICE, INC.
 PRINTEC, INC.
 TOKYO LINTEC KAKO, INC.
 OSAKA LINTEC KAKO, INC.

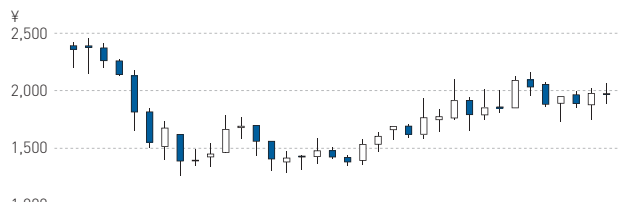
Overseas

LINTEC USA HOLDING, INC.*
 MADICO, INC.*
 LINTEC OF AMERICA, INC.*
 LINTEC EUROPE B.V.*
 LINTEC ADVANCED TECHNOLOGIES (EUROPE) GMBH*
 LINTEC (SUZHOU) TECH CORPORATION*
 LINTEC (TIANJIN) INDUSTRY CO., LTD.*
 LINTEC PRINTING & TECHNOLOGY (TIANJIN) CORPORATION*
 LINTEC ADVANCED TECHNOLOGIES (SHANGHAI), INC.*
 LINTEC SPECIALITY FILMS (TAIWAN), INC.*
 LINTEC HI-TECH (TAIWAN), INC.*
 LINTEC ADVANCED TECHNOLOGIES (TAIWAN), INC.*
 LINTEC KOREA, INC.*
 LINTEC SPECIALITY FILMS (KOREA), INC.*
 LINTEC ADVANCED TECHNOLOGIES (KOREA), INC.*
 PT. LINTEC INDONESIA*
 PT. LINTEC JAKARTA
 LINTEC SINGAPORE PRIVATE LIMITED*
 LINTEC ADVANCED TECHNOLOGIES (PHILIPPINES), INC.
 LINTEC PHILIPPINES (IPEZA), INC.
 LINTEC (THAILAND) CO., LTD.*
 LINTEC BKK PTE LIMITED
 LINTEC VIETNAM CO., LTD.
 LINTEC HANOI VIETNAM CO., LTD.
 LINTEC INDIA PRIVATE LIMITED
 LINTEC INDUSTRIES (MALAYSIA) SDN. BHD.*
 LINTEC INDUSTRIES (SARAWAK) SDN. BHD.*
 LINTEC ADVANCED TECHNOLOGIES (MALAYSIA) SDN. BHD.

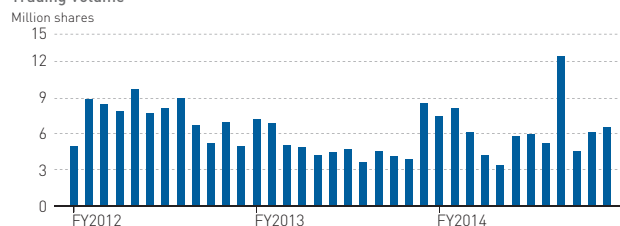
* Consolidated Subsidiary

Share Price / Trading Volume

Share Price



Trading Volume





LINTEC Corporation
Linking your dreams

LINTEC CORPORATION
23-23, Honcho, Itabashi-ku,
Tokyo 173-0001, Japan
www.lintec-global.com/